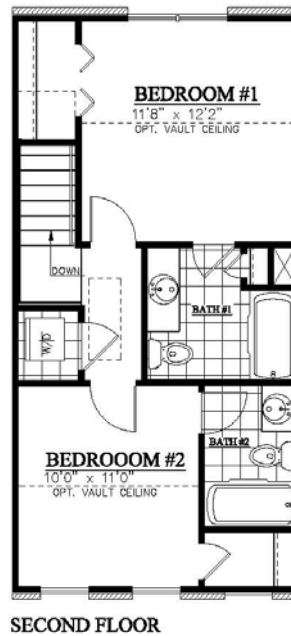
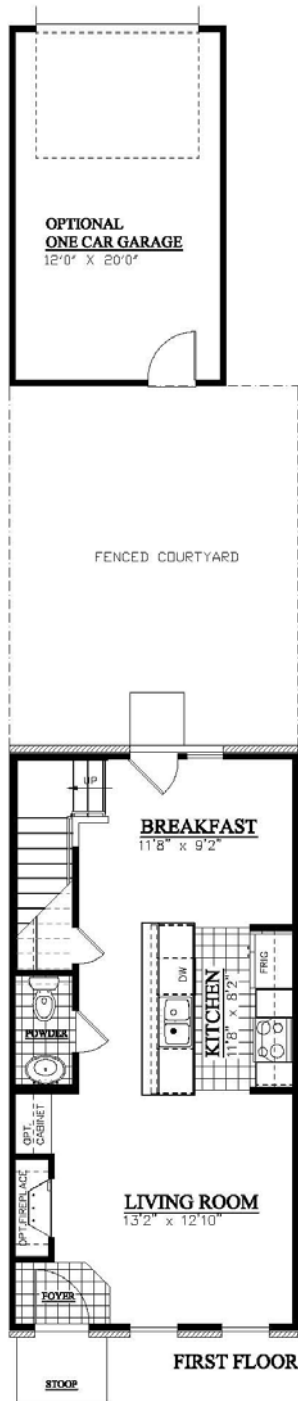


ANSONBOROUGH

URBAN TOWNHOME SERIES



Prices, Plans, dimensions, specifications, materials and availability are subject to change without notice and completed improvements may differ from illustrations. Artist's renderings are conceptual and may include options/upgrades such as dormers, planter boxes, porches, etc. and may illustrate roof lines which will vary due to site conditions. This does not constitute an offer to sell real property in any jurisdictions where prior registration or other advance qualifications of real property is required. Broker participation is welcome. Copyright 2005 Meeting Street Companies, LLC. Meeting Street and the Meeting Street logo are registered trademarks of Meeting Street Companies, LLC.

