

Meeting Street[®]

HOMES & COMMUNITIES

Towns at Seigle Point

Prime Charlotte location from the mid-\$300s

2-3 Bedrooms ~ 2.5-3.5 Baths ~ 1593 sq. ft.



Location Highlights:

- Adjacent to Little Sugar Creek Greenway
- Minutes to Uptown
- Direct access to E 12th Street and I-277
- Walk to Metropolitan Mall, grocery stores, restaurants, breweries and coffee bars
- 5 minute drive to Optimist Hall
- 15 minutes to Charlotte Douglas International Airport

Why rent when you can OWN a new home in a fantastic location?! Situated between Uptown and Plaza Midwood, you're in the center of it all! And access to the Little Sugar Creek Greenway is just steps away! Meeting Street Towns at Seigle Point is the perfect location for your new home.



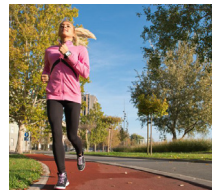


Meeting Street®

HOMES & COMMUNITIES
Towns at Seigle Point



in the heart of it all...





Meeting Street®
HOMES & COMMUNITIES



Main Floor

BEACON



Meeting Street®
HOMES & COMMUNITIES

3rd Floor

BEACON



Meeting Street®
HOMES & COMMUNITIES

Included Features

Townhomes

INTERIOR FEATURES

- ◆ Smooth finished 9 foot ceilings
- ◆ **Shaw** luxury vinyl plank in the foyer, laundry, powder room and kitchen
- ◆ **Ceramic Tile** in the master bath and bath 2
- ◆ **Shaw** continuous filament nylon carpet with 5.5lb pad
- ◆ Ventilated shelving in closets
- ◆ Smooth two-panel square top interior doors
- ◆ 1 x 4 baseboard and door casing
- ◆ **Dexter by Schlage** satin nickel door hardware with matching hinges
- ◆ **Savoy House** lighting
- ◆ 2 hour fire-rated wall between every residence, with sound deadening insulation

EXTERIOR FEATURES

- ◆ Brick and **HardiePlank** veneer with decorative features per elevation
- ◆ **Plygem** windows
- ◆ Three-tab asphalt shingles with 25 year manufacturer's limited warranty
- ◆ Two exterior hose bibs
- ◆ Dead bolt locks on all house exterior doors
- ◆ Professionally designed landscape package
- ◆ Outdoor balcony off main level

ELECTRICAL FEATURES

- ◆ Low-voltage prewiring for four outlets (data, cable or phone)
- ◆ Two exterior waterproof receptacles
- ◆ GFI receptacles in wet areas
- ◆ Smoke detectors & carbon monoxide detector (per code)

KITCHEN FEATURES

- ◆ **Timberlake** 36" cabinets
- ◆ **Granite** countertops in the kitchen
- ◆ **Delta** chrome faucet with pull out sprayer
- ◆ **GE Appliances** -
 - 30" Free standing, self cleaning ceramic top black range
 - Multi-cycle black dishwasher
 - Black over the range microwave
- ◆ Garbage disposal
- ◆ Icemaker connection line



BATH FEATURES

- ◆ **Delta** chrome faucets in all baths
- ◆ Tile shower with fiberglass pan in master shower
- ◆ Cultured marble vanity tops with undermount sink in master and 2nd baths
- ◆ Beveled oval mirror in powder bath
- ◆ 42" high mirror over vanity cabinets in full bathrooms
- ◆ Temperature controlled "anti-scald" shower heads

ENERGY EFFICIENT FEATURES

- ◆ **Lennox** gas heat & central air conditioning
- ◆ Separate HVAC zone for each floor
- ◆ Energy efficient insulation
- ◆ Water conserving **Sterling** toilets in all bathrooms
- ◆ 50 gallon energy efficient gas water heater
- ◆ **DuPont Tyvek** house wrap
- ◆ **Delta** low-flow faucets & shower heads
- ◆ Energy efficient fiberglass front entry door
- ◆ Energy saving low E vinyl windows

PERSONALIZED FEATURES

- ◆ **2-10 Home Buyers Warranty**
 - 10-Year** limited structural warranty
 - 2-Year** system coverage
 - 1-Year** workmanship coverage
- ◆ Pre-Construction, Pre-Drywall, New Home Orientation and Final Inspection with your Personal Builder
- ◆ 60 day service checkup and 11 month service checkup
- ◆ Emergency Service provided nights, weekends and holidays
- ◆ Personal appointment at our design center with an elaborate selection of options available.

A limited selection of optional and upgrade items are available. Meeting Street reserves the right to substitute materials, appliances or equipment which are substantially equivalent to those listed here. The Model Home includes special decorative upgrades and features that are not included in the Base price of the home. Seller is not responsible for amenities planned therein, and any illustrations or representations regarding improvements are subject to change. Meeting Street Homes & Communities features subject to change without notice.



Phone 704-714-0635
Email: SeiglePoint@meetingstreet.net
www.meetingstreet.net

Exclusively listed by:



2/17/21

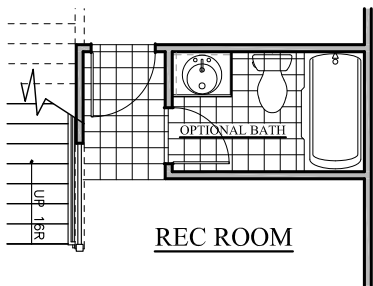


Siteplan subject to change.

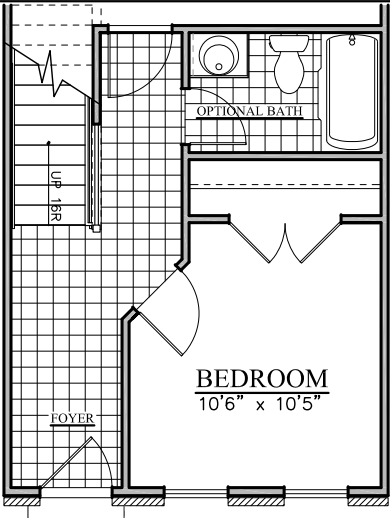
Meeting Street®

HOMES & COMMUNITIES

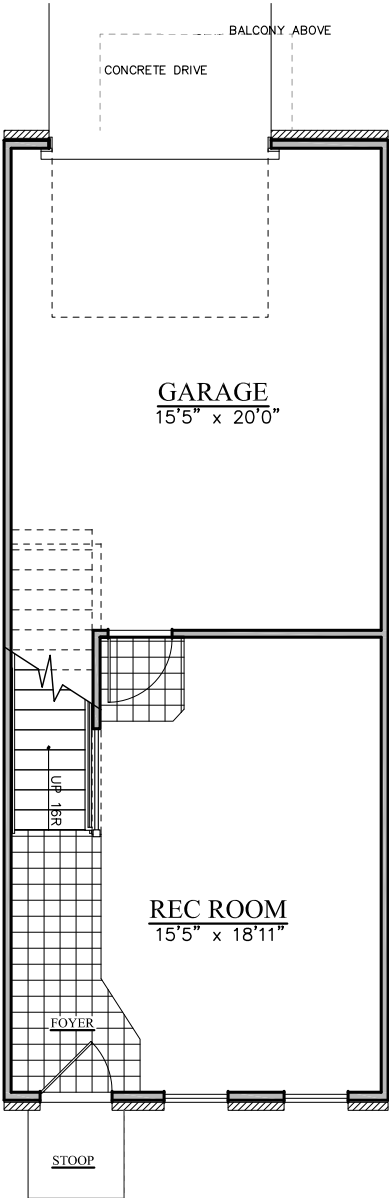
TOWNS AT
SEIGLE POINT



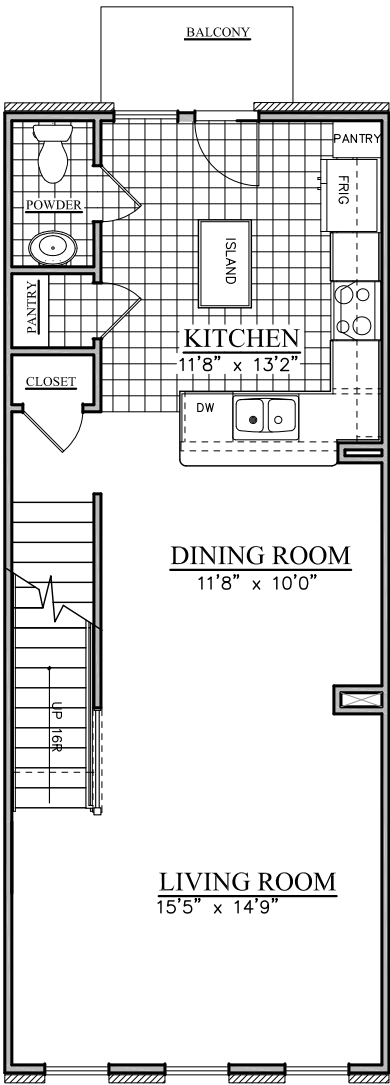
OPT. BSMT. BATH



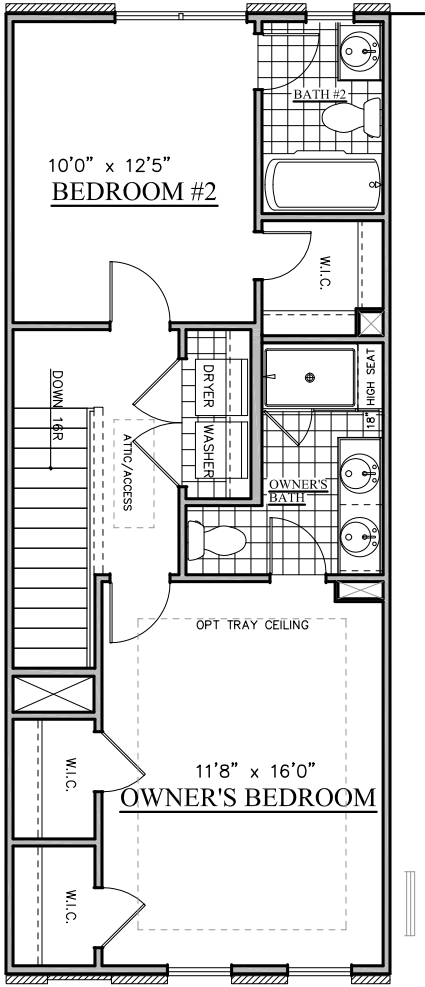
OPT. BSMT. BEDROOM W/BATH



BASEMENT LEVEL



1ST FLOOR



2ND FLOOR

Prices, plans, dimensions, specifications, materials and availability are subject to change without notice and completed improvements may differ from illustrations. artist's renderings are conceptual and may include options/upgrades such as dormers, planter boxes, porches, etc. and may illustrate roof lines which will vary due to site conditions. This does not constitute an offer to sell real property in any jurisdictions where prior registration or other advance qualifications of real property is required. Broker participation is welcome.

Copyright 2005 Meeting Street Companies, LLC. Meeting Street and the Meeting Street logo are registered trademarks of Meeting Street Companies, LLC.



Meeting Street®

HOMES & COMMUNITIES

More than just a *place* to live...it's a *way* to live.

Meeting Street Homes & Communities was founded by Joe Roy in 1996 to bring custom attention to all aspects of a community through an innovative manufacturing process. Classic architectural details, typically found in only the finest custom homes, are now available at an affordable price.

What's more, at Meeting Street Homes & Communities, we don't just build homes, we create beautiful, walkable communities. For this reason, you won't find a Meeting Street home just anywhere. The way you live, and how your home and community can promote that active lifestyle, are all part of our planning process. From our architectural style and beautiful streetscapes to our quality finishes and classic design touches, your Meeting Street home is built to stand the test of time and be one less thing on your mind.



Our mission is to create communities with distinguishing marks of quality, blending modern advances with classic styles in superior locations giving our customers a sense of belonging, pride and easy access to the active lifestyles they lead.



Meeting Street®
HOMES & COMMUNITIES

Community Locations

Davidson



Ambleside
from the mid \$600s
Single Family
Homes

Concord



**The Villas
at Tucker's Walk**
from the upper \$200s
Townhomes

Charlotte



**Meeting Street Towns
at Seigle Point**
from the mid \$300s
Townhomes

Mint Hill



Brighton Park
from the mid \$300s
Single Family
Homes

